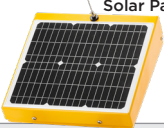


AB-1400-20W

Pedestrian Activated Flashing Beacon



SELF-CONTAINED 20 WATT SOLAR ENGINE

	Solar Panel Solar Cell - Monocrystalline Silicon Rated Power (Pmp) 20 Watts Rated Voltage (Vmp) 18 VDC Rated Current (Imp) 1.1 Amps CE and TUV certified
Solar Angle	7° (Flat) 44° (Standard)
Standard Battery Bank	AGM 12V, 18 Ah - UL Recognized, field replaceable
Cold Weather Battery Bank Option	AGM 12V, 16 Ah - UL Recognized, field replaceable
Solar Engine Housing Material	A5052 Sheet Aluminum (Enclosure) 6061-T6 Aluminum (Mount)
Solar Engine Dimensions	15.75" x 13.25" X 4.5" (40 x 33.7 x 11.5cm)*

POWER MANAGEMENT

Rated Usage	300 cycles per day, 25 second activation
Charged Capacity	Up to 30 days at rated usage
Automatic Light Control (ALC)	Various stages of brightness for different solar conditions and battery levels

SYSTEM PROTECTION

Low Voltage Disconnect	9.5 VDC
Over Current Protection	1.8 Amp PTC auto-reset fuse
Self Monitoring	Visual notification of sub-optimal operation

LED BEACON SIGNAL HEAD

Standard Followed	ITE VTCSSH-STD 2005
LED Beacon Signal Head Setup	Single Head Pole Top Mounting
Lens Material	UV Stabilized Polycarbonate
LED Housing	100% Polycarbonate
LED Size	8" Diameter (200 mm)* 12" Diameter (300mm)*
LED Housing Dimensions	8" head - 14" x 10" x 6" (35 x 25 x 16 cm)* 12" head - 17" x 14" x 6" (44 x 25 x 17 cm)*
Std. LED Color Options	Amber or Red (custom colors available)

COMMUNICATION

Band of Operation	ISM Band (902-928 MHz)
Compliance	FCC and IC Compliant
Range	Up to 0.5 miles (800 m) with line of sight
Network Addresses	16 unique addresses to avoid interference between multiple crosswalk locations
Compatibility	Can communicate with other AB units

SYSTEM OPTIONS

LED & Solar Engine Housing Colors	Yellow, Black or Green (custom colors available)
Mounting Options	Round Pole Collars: 2.5", 3.5", 5" and 6" Square Wood Post Saddle: 4x4", 6x6" Telespar & U-Channel: 2" Side Mount Bracket: 12", 18" and custom lengths available Custom Mounts Available

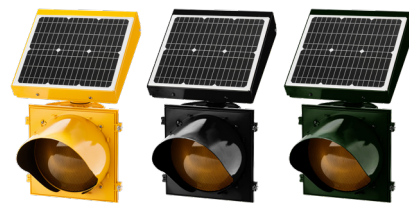


AVAILABLE WITH RED LEDS FOR STOP SIGNS, AMBER LEDS FOR WARNING SIGNS

SYSTEM OVERVIEW

Compliance	FHWA MUTCD Compliant
Standard Operation	Pedestrian Activated via push button or JSFT remote transmitters
Flash Pattern Options	MUTCD Standard (0.5 seconds ON, 0.5 seconds OFF) JSFT Strobe Energy Efficient Flash Pattern**
Activation Duration	Variable from 5 seconds to 4 hours
Std. Operating Temperature	14°F to +165°F (-10°C to +74°C)
Cold Weather Upgrade Option	-40°F to +176°F (-40°C to +80°C)
System Voltage	12 VDC
Packaged Dimensions	8" head - 22" x 18" x 16" @ 36LBS (56 x 46 x 41cm @ 16 kg)* 12" head - 24" x 18" x 18" @ 38LBS (61 x 46 x 46cm @ 17 kg)*

SIGNAL HEAD AND SOLAR ENGINE AVAILABLE WITH STANDARD COLOURS; YELLOW, BLACK, OR GREEN. CUSTOM COLOURS ARE ALWAYS AVAILABLE.



SALES

Toll-Free 1.800.990.2454
sales@jsftech.com

SUPPORT

Toll-Free 1.800.990.2454
support@jsftech.com

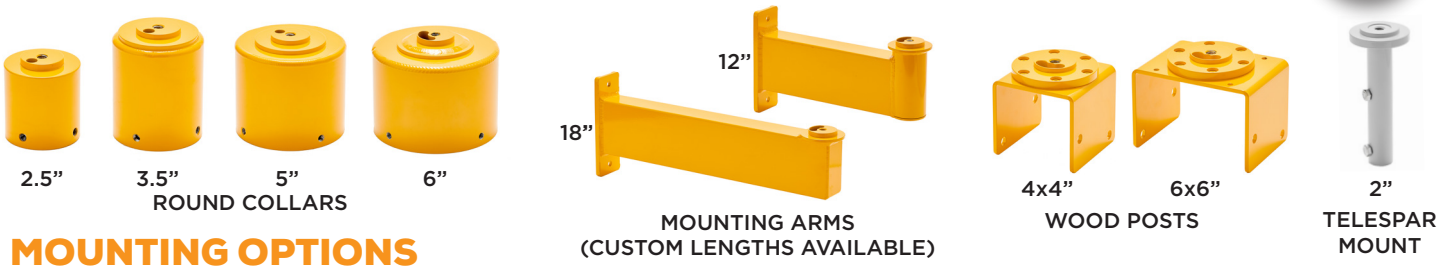
ADDRESS

6582 Bryn Road,
Victoria, BC V8M 1X6

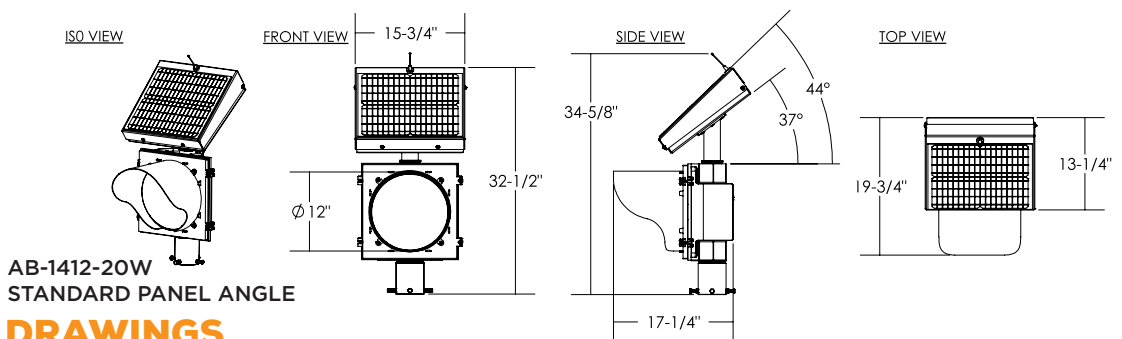
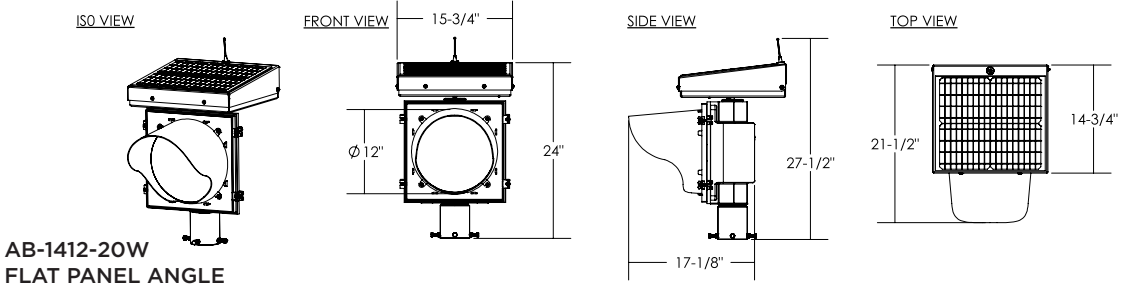
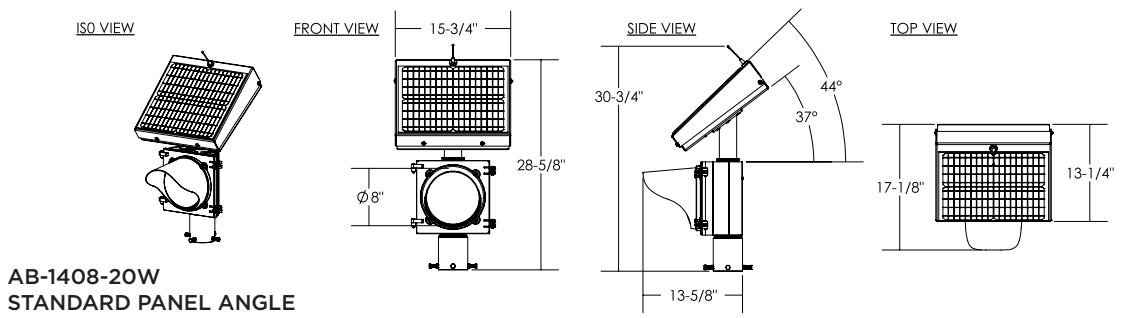
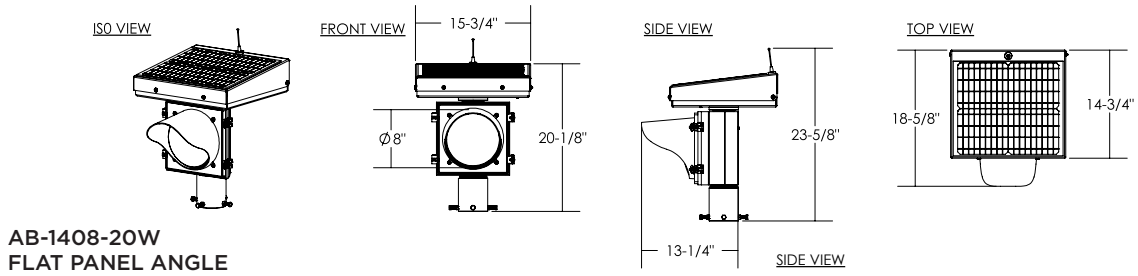
WARRANTY 5-year Limited Warranty for defects in workmanship and materials (excludes batteries and vandalism)



AB-1400-20W
Pedestrian Activated Flashing Beacon



MOUNTING OPTIONS



SYSTEM DRAWINGS



AB-1400-40W

Pedestrian Activated Flashing Beacon



SELF-CONTAINED 40 WATT SOLAR ENGINE	
Solar Panel	Solar Cell - Monocrystalline Silicon Rated Power (Pmp) 40 Watts Rated Voltage (Vmp) 18 VDC Rated Current (Imp) 2.2 Amps CE and TUV certified
Solar Angle	7° (Flat) 44° (Standard)
Standard Battery Bank	2 x AGM 12V, 18 Ah - UL Recognized, field replaceable
Cold Weather Battery Bank Option	2 x AGM 12V, 16 Ah - UL Recognized, field replaceable
Solar Engine Housing Material	A5052 Sheet Aluminum (Enclosure) 6061-T6 Aluminum (Mount)
Solar Engine Dimensions	30.875" x 13.25" x 4.5" (78.4 x 33.7 x 11.5cm)*
POWER MANAGEMENT	
Rated Usage	300 cycles per day, 25 second activation
Charged Capacity	Up to 30 days at rated usage
Automatic Light Control (ALC)	Various stages of brightness for different solar conditions and battery levels
SYSTEM PROTECTION	
Low Voltage Disconnect	9.5 VDC
Over Current Protection	1.8 Amp PTC auto-reset fuse
Self Monitoring	Visual notification of sub-optimal operation
LED BEACON SIGNAL HEAD	
Standard Followed	ITE VTCSH-STD 2005
LED Beacon Signal Head Setup	Single Head Pole Top Mounting
Lens Material	UV Stabilized Polycarbonate
LED Housing	100% Polycarbonate
LED Size	8" Diameter (200 mm)* 12" Diameter (300mm)*
LED Housing Dimensions	8" head - 14" x 10" x 6" (35 x 25 x 16 cm)* 12" head - 17" x 14" x 6" (44 x 25 x 17 cm)*
Std. LED Color Options	Amber or Red (custom colors available)
COMMUNICATION	
Band of Operation	ISM Band (902-928 MHz)
Compliance	FCC and IC Compliant
Range	Up to 0.5 miles (800 m) with line of sight
Network Addresses	16 unique addresses to avoid interference between multiple crosswalk locations
Compatibility	Can communicate with other AB units
SYSTEM OPTIONS	
LED & Solar Engine Housing Colors	Black, green or yellow, custom colors also available
Mounting Options	Round Pole Collars: 2.5", 3.5", 5" and 6" Square Wood Post Saddle: 4x4", 6x6" Telespar & U-Channel: 2" Side Mount Bracket: 12", 18" and custom lengths available Custom Mounts Available



1412-40W
44° Standard Angle
12" Amber LED

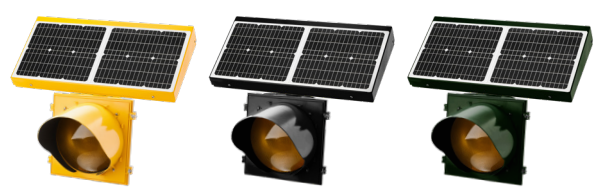
1408-40W
7° Standard Angle
8" Red LED

AVAILABLE WITH RED LEDS FOR STOP SIGNS, AMBER LEDS FOR WARNING SIGNS

SYSTEM OVERVIEW

Compliance	FHWA MUTCD compliant
Standard Operation	Pedestrian Activated via push button or JSFT remote transmitters
Flash Pattern Options	MUTCD Standard (0.5 seconds ON, 0.5 seconds OFF) JSFT Strobe Energy Efficient Flash Pattern**
Activation Duration	Variable from 5 seconds to 4 hours
Std. Operating Temperature	14°F to +165°F (-10°C to +74°C)
Cold Weather Upgrade Option	-40°F to +176°F (-40°C to +80°C)
System Voltage	12 VDC
Packaged Dimensions	8" head - 36" x 18" x 18" @ 58lbs (91 x 46 x 46 cm @ 26 kg) 12" head - 35" x 28" x 17" @ 70 lbs (89 x 71 x 43cm @ 32kg)*

SIGNAL HEAD AND SOLAR ENGINE AVAILABLE WITH STANDARD COLOURS; YELLOW, BLACK, OR GREEN. CUSTOM COLOURS ARE ALWAYS AVAILABLE.



<p>SALES Toll-Free 1.800.990.2454 sales@jsftech.com</p>	<p>SUPPORT Toll-Free 1.800.990.2454 support@jsftech.com</p>	<p>ADDRESS 6582 Bryn Road, Victoria, BC V8M 1X6</p>
--	--	--

WARRANTY 5-year Limited Warranty for defects in workmanship and materials (excludes batteries and vandalism)



JSF
TECHNOLOGIES
SOLAR TRAFFIC SOLUTIONS

www.JSFTech.com

sales@JSFTech.com

1-800-990-2454

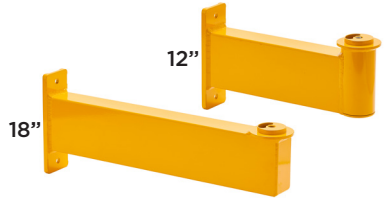


AB-1400-40W

Pedestrian Activated Flashing Beacon



2.5" 3.5" 5" 6"
ROUND COLLARS



12" 18"
MOUNTING ARMS
(CUSTOM LENGTHS AVAILABLE)



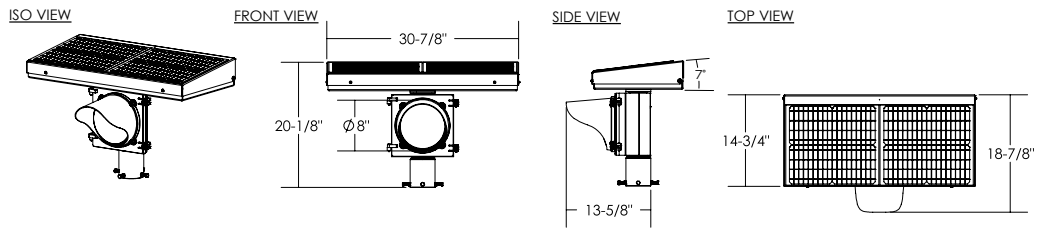
4x4" 6x6"
WOOD POSTS



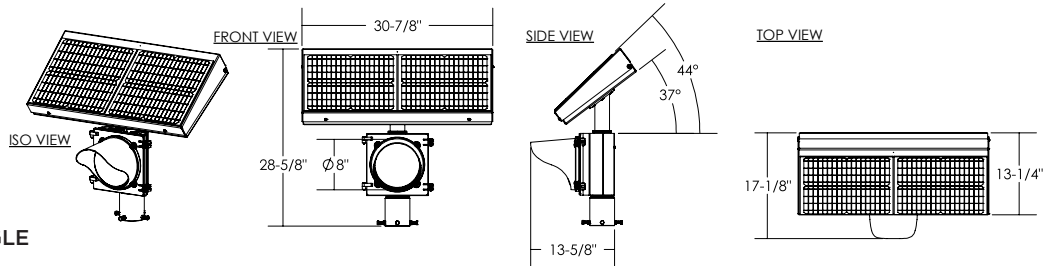
2"
TELESPAR
MOUNT

MOUNTING OPTIONS

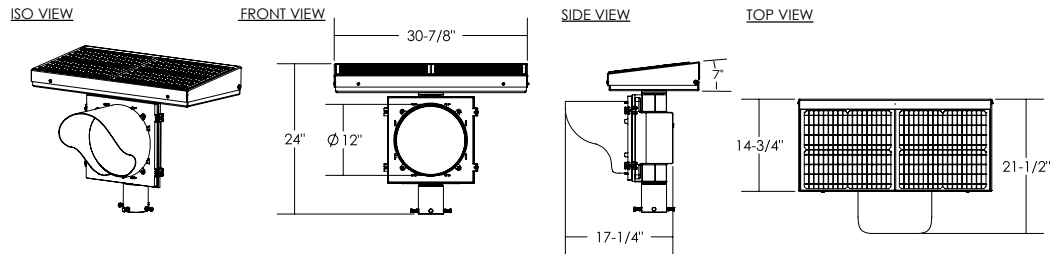
AB-1408-40W
FLAT PANEL ANGLE



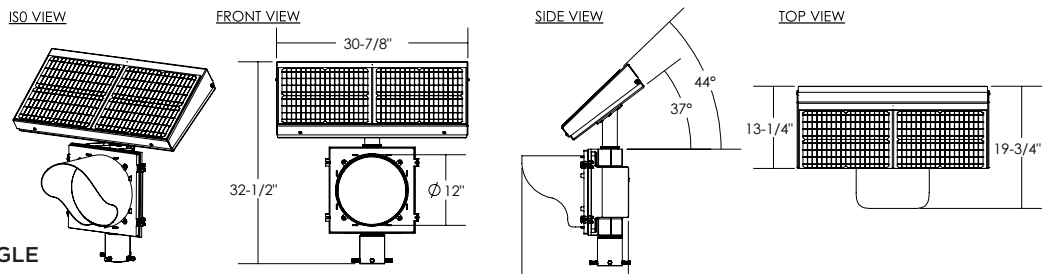
AB-1408-40W
STANDARD PANEL ANGLE



AB-1412-40W
FLAT PANEL ANGLE



AB-1412-40W
STANDARD PANEL ANGLE



SYSTEM DRAWINGS

AB-1400-AC

Pedestrian Activated Flashing Beacon



AC ENCLOSURE

Enclosure Material	0.08" Type 5052 H-32 aluminum
Enclosure Dimensions (Small)	12" x 12" x 4" (30 x 30 x 10cm)*
Enclosure Dimensions (Large)	16" x 14" x 8" (41 x 36 x 20cm)*
Standards	UL 508 Type 3R, 4, 4X, 12, and 13 CSA Type 3R, 4, 4X, 12, and 13
Compliance	NEMA Type 3R, 4, 4X, 12 and 13 JIC EGP-1-1967 IEC 60529, IP66
Enclosure Colors	Aluminum, Black, Green or Yellow (Custom Colors Available)



AC BRICK SPECIFICATIONS

Dimensions	6.375" x 1.625" x 1.25" @ 0.9 lbs (16.25 x 4.3 x 3.2 cm @ 0.41 kg)*
Power Supply Rating	120 VAC to 15 VDC Class 2 Supply
Standards	IP67, CE Certified, UL Recognized

SYSTEM PROTECTION

Over Current Protection	1.8 Amp PTC auto-reset fuse
Self Monitoring	Visual notification of sub-optimal operation

LED BEACON SIGNAL HEAD

Standard Followed	ITE VTCSH-STD 2005
LED Beacon Signal Head Setup	Single Head Pole Top Mounting
Lens Material	UV Stabilized Polycarbonate
LED Housing	100% Polycarbonate
LED Size	8" Diameter (200 mm)* 12" Diameter (300mm)*
LED Housing Dimensions	8" head - 14" x 10" x 6" (35 x 25 x 16 cm)* 12" head - 17" x 14" x 6" (44 x 25 x 17 cm)*
Std. LED Color Options	Amber or Red (custom colors available)

COMMUNICATION

Band of Operation	ISM Band (902-928 MHz)
Compliance	FCC and IC Compliant
Range	Up to 0.5 miles (800 m) with line of sight
Network Addresses	16 unique addresses to avoid interference between multiple crosswalk locations
Compatibility	Can communicate with other AB units

SYSTEM OPTIONS

LED Housing Colors	Yellow, Black or Green (custom colors available)
Mounting Options	Round Pole Collars: 2.5", 3.5", 5" and 6" Square Wood Post Saddle: 4x4", 6x6" Telespar & U-Channel: 2" Side Mount Bracket: 12", 18" and custom lengths available Custom Mounts Available

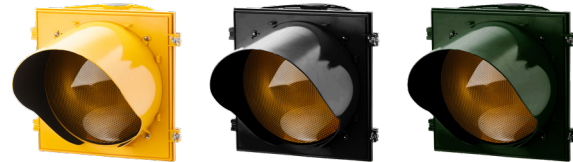


AVAILABLE WITH RED LEDS FOR STOP SIGNS, AMBER LEDS FOR WARNING SIGNS

SYSTEM OVERVIEW

Compliance	FHWA MUTCD Compliant
Standard Operation	Pedestrian Activated via push button or JSFT remote transmitters
Flash Pattern Options	MUTCD Standard (0.5 seconds ON, 0.5 seconds OFF) JSFT Strobe Energy Efficient Flash Pattern**
Activation Duration	Variable from 5 seconds to 4 hours
Std. Operating Temperature	-40°F to +176°F (-40°C to +80°C)
System Voltage	12 VDC
Packaged Dimensions	Varies depending on configuration and installation method

SIGNAL HEAD AND SOLAR ENGINE AVAILABLE WITH STANDARD COLOURS; YELLOW, BLACK, OR GREEN. CUSTOM COLOURS ARE ALWAYS AVAILABLE.



SALES

Toll-Free 1.800.990.2454
sales@jsftech.com

SUPPORT

Toll-Free 1.800.990.2454
support@jsftech.com

ADDRESS

6582 Bryn Road,
Victoria, BC V8M 1X6

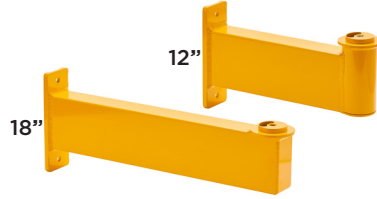
WARRANTY 5-year Limited Warranty for defects in workmanship and materials (excludes batteries and vandalism)



AB-1400-AC
Pedestrian Activated Flashing Beacon



ROUND COLLARS



MOUNTING ARMS
(CUSTOM LENGTHS AVAILABLE)



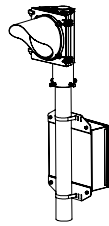
WOOD POSTS



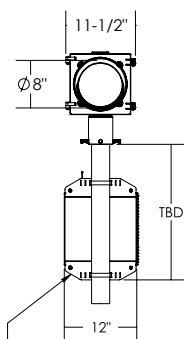
TELESPAR MOUNT

MOUNTING OPTIONS

ISO VIEW

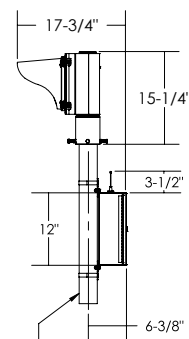


FRONT VIEW



MOUNTING HARDWARE SHOWN FOR REF. ONLY

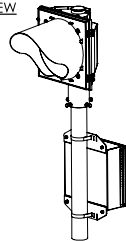
SIDE VIEW



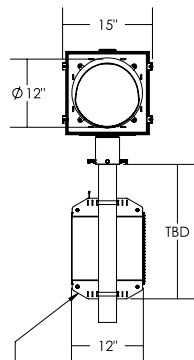
Ø 3.0 POLE SHOWN FOR REFERENCE ONLY

AB-1408-AC

ISO VIEW

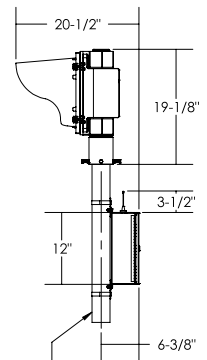


FRONT VIEW



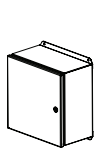
MOUNTING HARDWARE SHOWN FOR REF. ONLY

SIDE VIEW

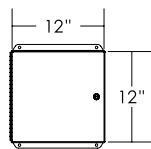


Ø 3.0 POLE SHOWN FOR REFERENCE ONLY

AB-1412-AC



ISO VIEW

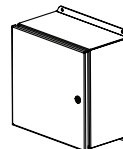


FRONT VIEW

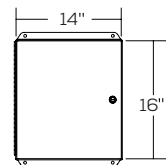


SIDE VIEW

SMALL AC CABINET



ISO VIEW



FRONT VIEW



SIDE VIEW

LARGE AC CABINET

SYSTEM DRAWINGS