

AB-3400-20W

Pedestrian Activated Flashing Beacon



SELF-CONTAINED 20 WATT SOLAR ENGINE

Solar Panel	Solar Cell - Monocrystalline Silicon Rated Power (Pmp) 20 Watts Rated Voltage (Vmp) 18 VDC Rated Current (Imp) 1.1 Amps CE and TUV certified
--------------------	--

Solar Angle	44° (Standard)
--------------------	----------------

Standard Battery Bank	AGM 12V, 18 Ah - UL Recognized, field replaceable
------------------------------	---

Cold Weather Battery Bank Option	AGM 12V, 16 Ah - UL Recognized, field replaceable
---	---

Solar Engine Housing Material	A5052 Sheet Aluminum (Enclosure) 6061-T6 Aluminum (Mount)
--------------------------------------	--

Solar Engine Dimensions	15.75" x 13.25" X 4.5" (40 x 33.7 x 11.5cm)*
--------------------------------	--

POWER MANAGEMENT

Rated Usage	300 cycles per day, 25 second activation
--------------------	--

Charged Capacity	Up to 30 days at rated usage
-------------------------	------------------------------

Automatic Light Control (ALC)	Various stages of brightness for different solar conditions and battery levels
--------------------------------------	--

SYSTEM PROTECTION

Low Voltage Disconnect	9.5 VDC
-------------------------------	---------

Over Current Protection	1.8 Amp PTC auto-reset fuse
--------------------------------	-----------------------------

Self Monitoring	Visual notification of sub-optimal operation
------------------------	--

LED BEACON SIGNAL HEAD

Standard Followed	ITE VTCSSH-STD 2005
--------------------------	---------------------

LED Beacon Signal Head Setup	Dual Heads, Overhead Horizontal Mounting
-------------------------------------	---

Lens Material	UV stabilized polycarbonate and Abrasion resistant
----------------------	--

LED Housing	100% Polycarbonate
--------------------	--------------------

LED Size	8" Diameter (200 mm)* 12" Diameter (300mm)*
-----------------	--

LED Housing Dimensions	8" head - 14" x 10" x 6" (35 x 25 x 16 cm)* 12" head - 17" x 14" x 6" (44 x 25 x 17 cm)*
-------------------------------	---

Std. LED Color Options	Amber or Red (custom colors available)
-------------------------------	--

COMMUNICATION

Band of Operation	ISM Band (902-928 MHz)
--------------------------	------------------------

Compliance	FCC and IC Compliant
-------------------	----------------------

Range	Up to 0.5 miles (800 m) with line of sight
--------------	--

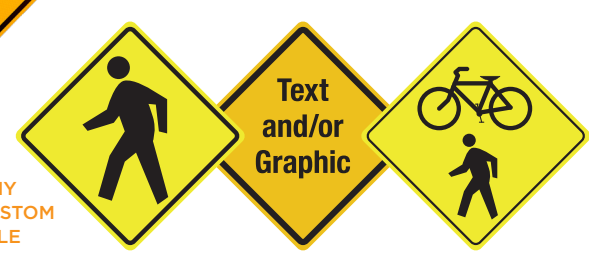
Network Addresses	16 unique addresses to avoid interference between multiple crosswalk locations
--------------------------	--

Compatibility	Can communicate with other AB units
----------------------	-------------------------------------

SYSTEM OPTIONS

LED & Solar Engine Housing Colors	Yellow, Black or Green (custom colors available)
--	--

Mounting Options	Round Pole Collars: 2.5", 3.5", 5" and 6" Square Wood Post Saddle: 4x4", 6x6" Telespar & U-Channel: 2" Side Mount Bracket: 9", 12", 18" and custom lengths available Custom Mounts Available
-------------------------	--



AVAILABLE WITH ANY STANDARD SIGN. CUSTOM SIGNS ARE AVAILABLE

AVAILABLE WITH RED LEDS FOR STOP SIGNS, AMBER LEDS FOR WARNING SIGNS

SYSTEM OVERVIEW

Compliance	FHWA MUTCD Compliant
Standard Operation	Pedestrian Activated via push button or JSFT remote transmitters
Flash Pattern Options	MUTCD Standard (0.5 seconds ON, 0.5 seconds OFF) JSFT Strobe Energy Efficient Flash Pattern** MUTCD Wig - Wag JSFT Wig - Wag Strobe Energy Efficient Flash Pattern**
Activation Duration	Variable from 5 seconds to 4 hours
Std. Operating Temperature	14°F to +165°F (-10°C to +74°C)
Cold Weather Upgrade Option	-40°F to +176°F (-40°C to +80°C)
System Voltage	12 VDC
Packaged Dimensions	8" head - 30" x 18" x 18" @ 43 lbs (76 x 46 x 46cm @ 20 kg)* 12" head - 30" x 18" x 18" @ 53 lbs (76 x 46 x 46cm @ 24 kg)*

SIGNAL HEAD AND SOLAR ENGINE AVAILABLE WITH STANDARD COLOURS; YELLOW, BLACK, OR GREEN. CUSTOM COLOURS ARE ALWAYS AVAILABLE.

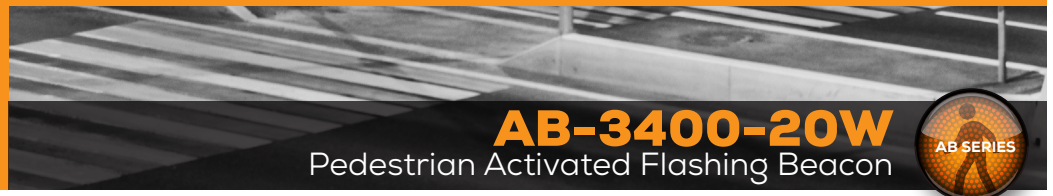


SALES
Toll-Free 1.800.990.2454
sales@jsftech.com

SUPPORT
Toll-Free 1.800.990.2454
support@jsftech.com

ADDRESS
6582 Bryn Road,
Victoria, BC V8M 1X6

WARRANTY 5-year Limited Warranty for defects in workmanship and materials (excludes batteries and vandalism)

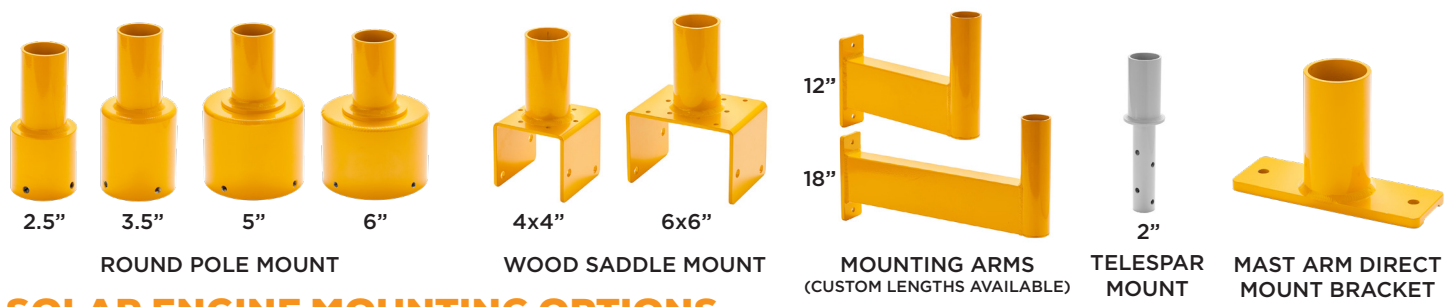


AB-3400-20W

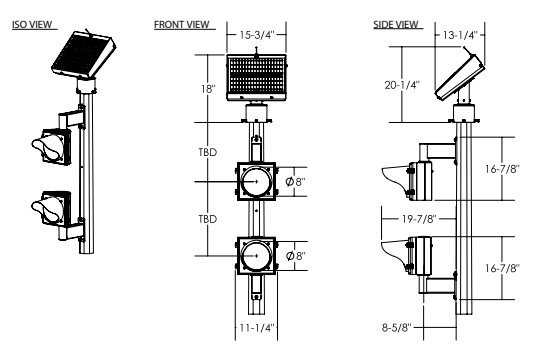
Pedestrian Activated Flashing Beacon



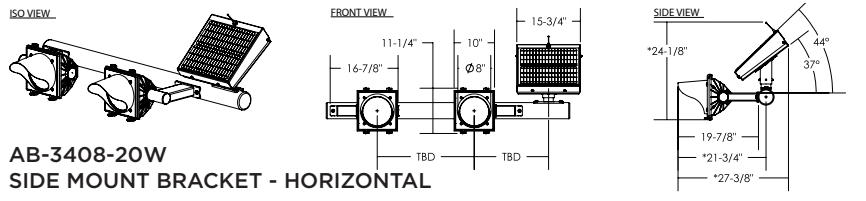
SIGNAL HEAD MOUNTING OPTIONS



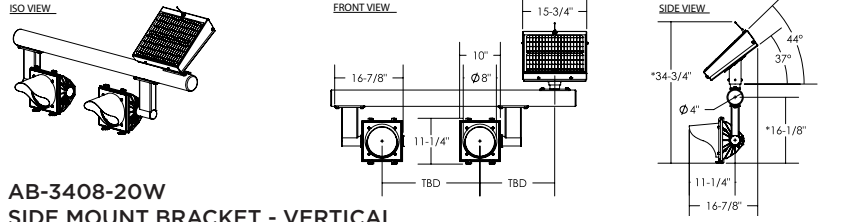
SOLAR ENGINE MOUNTING OPTIONS



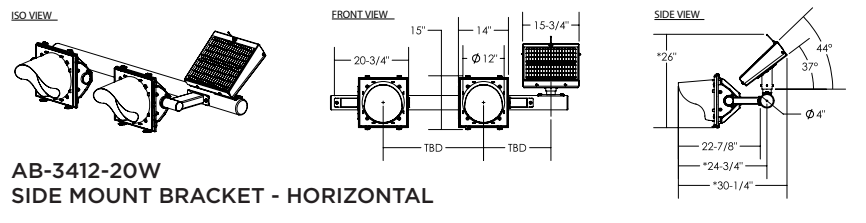
AB-3408-20W
SIDE MOUNT BRACKET - VERTICAL POLE



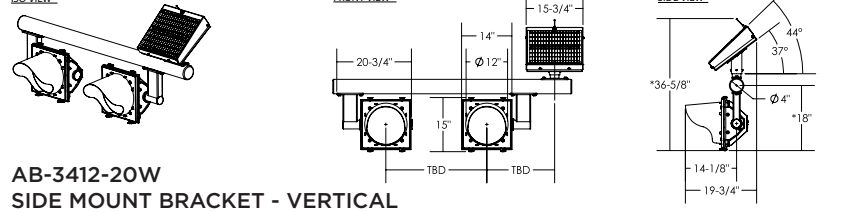
AB-3408-20W
SIDE MOUNT BRACKET - HORIZONTAL



AB-3412-20W
SIDE MOUNT BRACKET - VERTICAL



AB-3412-20W
SIDE MOUNT BRACKET - HORIZONTAL



AB-3412-20W
SIDE MOUNT BRACKET - VERTICAL

SYSTEM DRAWINGS