




FL-7400-20W 24-Hour Flashing Beacon



SELF-CONTAINED 20 WATT SOLAR ENGINE

	Solar Panel Solar Cell - Monocrystalline Silicon Rated Power (Pmp) 20 Watts Rated Voltage (Vmp) 18 VDC Rated Current (Imp) 1.1 Amps CE and TUV certified
	Solar Angle 44° (Standard)
	Standard Battery Bank AGM 12V, 18 Ah - UL Recognized, field replaceable
	Cold Weather Battery Bank Option AGM 12V, 16 Ah - UL Recognized, field replaceable
	Solar Engine Housing Material A5052 Sheet Aluminum (Enclosure) 6061-T6 Aluminum (Mount)
	Solar Engine Dimensions 15.75" x 13.25" X 4.5" (40 x 33.7 x 11.5cm)*

POWER MANAGEMENT

Charged Capacity	Up to 30 days at rated usage
Automatic Light Control (ALC)	Various stages of brightness for different solar conditions and battery levels

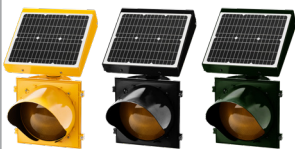
SYSTEM PROTECTION

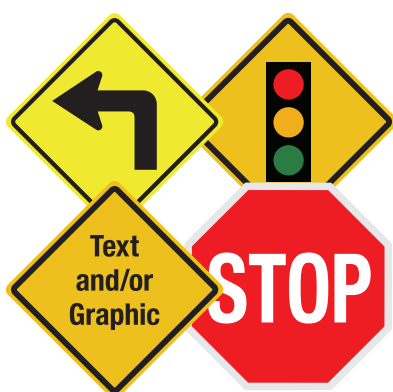
Low Voltage Disconnect	9.5 VDC
Over Current Protection	1.8 Amp PTC auto-reset fuse
Self Monitoring	Visual notification of sub-optimal operation

LED BEACON SIGNAL HEAD

Standard Followed	ITE VTCOSH-STD 2005
LED Beacon Signal Head Setup	Dual Heads, Vertical Pole Mounting
Lens Material	UV stabilized polycarbonate and Abrasion resistant
LED Housing	100% Polycarbonate
LED Size	8" Diameter (200 mm)* 12" Diameter (300mm)*
LED Housing Dimensions	8" head - 14" x 10" x 6" (35 x 25 x 16 cm)* 12" head - 17" x 14" x 6" (44 x 25 x 17 cm)*
Std. LED Color Options	Amber or Red (custom colors available)

SYSTEM OPTIONS

LED & Solar Engine Housing Colors	Yellow, Black or Green (custom colors available)
	
Mounting Options	Side Mount Bracket: 12", and 18" and custom lengths available Signal & Solar Head Side Mount Bracket Custom Mounts Available



AVAILABLE WITH ANY STANDARD SIGN.
CUSTOM SIGNS ARE AVAILABLE

AVAILABLE WITH RED LEDS FOR STOP
SIGNS, AMBER LEDS FOR WARNING SIGNS

SYSTEM OVERVIEW

Compliance	FHWA MUTCD Compliant
Standard Operation	Continuous Flashing, 24-hours a day, 365 days a year Manual On/Off capability with user supplied switch
Flash Pattern Options	MUTCD Standard (0.5 seconds ON, 0.5 seconds OFF) JSFT Strobe Energy Efficient Flash Pattern** MUTCD Wig - Wag JSFT Wig - Wag Strobe Energy Efficient Flash Pattern**
Std. Operating Temperature	14°F to +165°F (-10°C to +74°C)
Cold Weather Upgrade Option	-40°F to +176°F (-40°C to +80°C)
System Voltage	12 VDC
Packaged Dimensions	8" head - 30" x 18" x 18" @ 43 lbs (76 x 46 x 46cm @ 19.5 kg)* 12" head - 30" x 18" x 18" @ 53 lbs (76 x 46 x 46cm @ 24 kg)*



7408-20W
44° Standard Angle
8" Amber LEDs



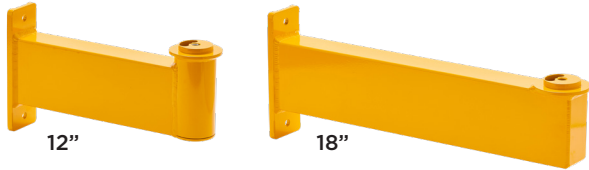
SALES
Toll-Free 1.800.990.2454
sales@jsftech.com

SUPPORT
Toll-Free 1.800.990.2454
support@jsftech.com

ADDRESS
6582 Bryn Road,
Victoria, BC V8M 1X6

WARRANTY 5-year Limited Warranty for defects in workmanship and materials (excludes batteries and vandalism)

FL-7400-20W 24-Hour Flashing Beacon



SIDE MOUNT BRACKET

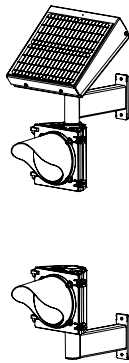


SIGNAL HEAD & SOLAR ENGINE
SIDE MOUNT BRACKET

SIGNAL HEAD MOUNTING OPTIONS

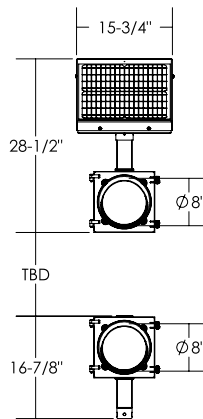
SOLAR ENGINE MOUNTING OPTIONS

ISO VIEW

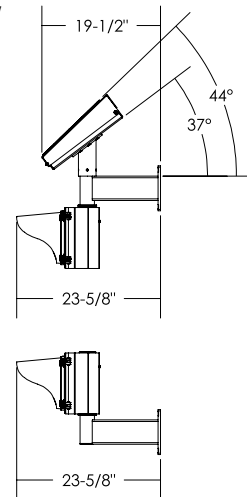


FL-7408-20W

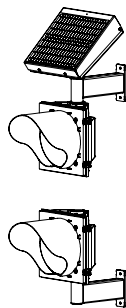
FRONT VIEW



SIDE VIEW

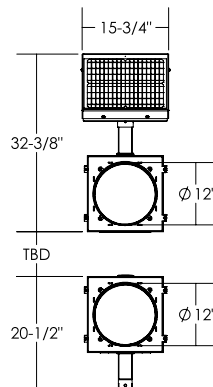


ISO VIEW

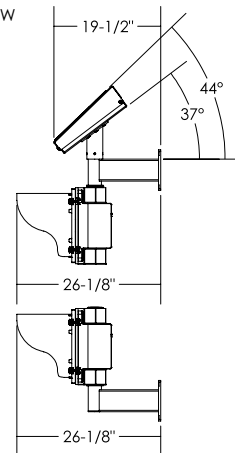


FL-7412-20W

FRONT VIEW



SIDE VIEW

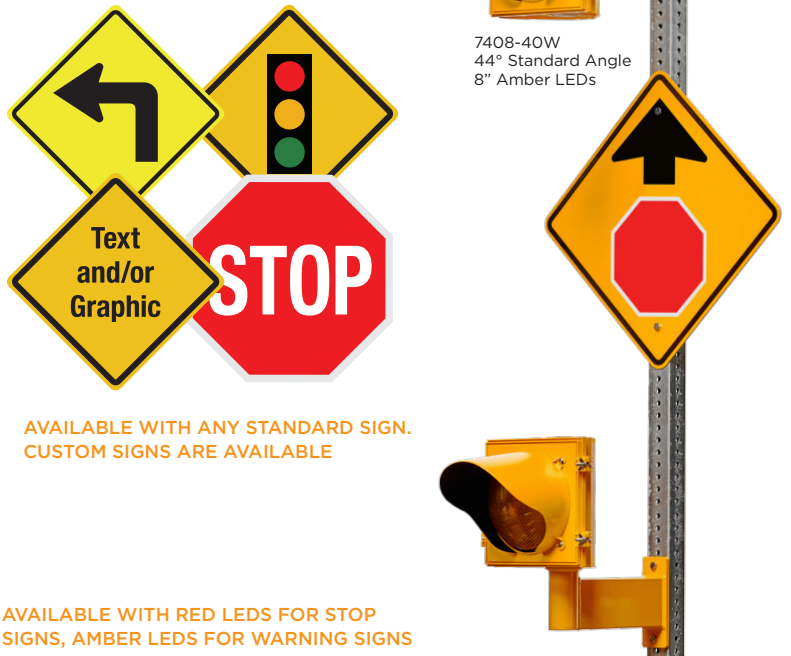


SYSTEM DRAWINGS

FL-7400-40W 24-Hour Flashing Beacon



7408-40W
44° Standard Angle
8" Amber LEDs

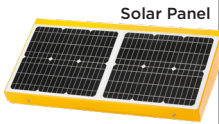


AVAILABLE WITH ANY STANDARD SIGN.
CUSTOM SIGNS ARE AVAILABLE

AVAILABLE WITH RED LEDS FOR STOP
SIGNS, AMBER LEDS FOR WARNING SIGNS



SELF-CONTAINED 40 WATT SOLAR ENGINE

	Solar Panel Solar Cell - Monocrystalline Silicon Rated Power (Pmp) 40 Watts Rated Voltage (Vmp) 18 VDC Rated Current (Imp) 2.2 A Certifications: CE and TUV certified
	Solar Angle 44° (Standard)
	Standard Battery Bank 2 x AGM 12V, 18 Ah - UL Recognized, field replaceable
	Cold Weather Battery Bank Option 2 x AGM 12V, 16 Ah - UL Recognized, field replaceable
	Solar Engine Housing Material A5052 Sheet Aluminum (Enclosure) 6061-T6 Aluminum (Mount)
	Solar Engine Dimensions 30.875" x 13.25" x 4.5" (78.4 x 33.7 x 11.5cm)*

POWER MANAGEMENT

Charged Capacity	Up to 30 days at rated usage
Automatic Light Control (ALC)	Various stages of brightness for different solar conditions and battery levels

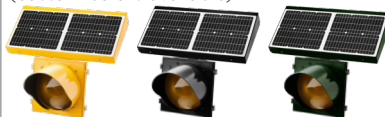
SYSTEM PROTECTION

Low Voltage Disconnect	9.5 VDC
Over Current Protection	1.8 Amp PTC auto-reset fuse
Self Monitoring	Visual notification of sub-optimal operation

LED BEACON SIGNAL HEAD

Standard Followed	ITE VTCOSH-STD 2005
LED Beacon Signal Head Setup	Dual Heads, Vertical Pole Mounting
Lens Material	UV stabilized polycarbonate and Abrasion resistant
LED Housing	100% Polycarbonate
LED Size	8" Diameter (200 mm)* 12" Diameter (300mm)*
LED Housing Dimensions	8" head - 14" x 10" x 6" (35 x 25 x 16 cm)* 12" head - 17" x 14" x 6" (44 x 25 x 17 cm)*
Std. LED Color Options	Amber or Red (custom colors available)

SYSTEM OPTIONS

LED & Solar Engine Housing Colors	Yellow, Black or Green (custom colors available) 
Mounting Options	Side Mount Bracket: 12", and 18" and custom lengths available Signal & Solar Head Side Mount Bracket Custom Mounts Available

SYSTEM OVERVIEW

Compliance	FHWA MUTCD Compliant
Standard Operation	Continuous Flashing, 24-hours a day, 365 days a year Manual On/Off capability with user supplied switch
Flash Pattern Options	MUTCD Standard (0.5 seconds ON, 0.5 seconds OFF) JSFT Strobe Energy Efficient Flash Pattern** MUTCD Wig - Wag JSFT Wig - Wag Strobe Energy Efficient Flash Pattern**
Std. Operating Temperature	14°F to +165°F (-10°C to +74°C)
Cold Weather Upgrade Option	-40°F to +176°F (-40°C to +80°C)
System Voltage	12 VDC
Packaged Dimensions	8" head - 36" x 18" x 18" @ 75 lbs (92 x 46 x 46cm @ 34 kg)* 12" head - 36" x 18" x 18" @ 78 lbs (91.5 x 45.7 x 45.7cm @ 35 kg)*

SALES

Toll-Free 1.800.990.2454
sales@jsftech.com

SUPPORT

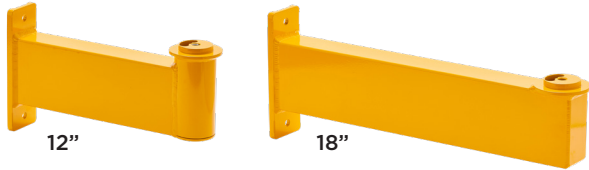
Toll-Free 1.800.990.2454
support@jsftech.com

ADDRESS

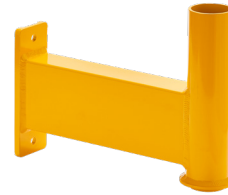
6582 Bryn Road,
Victoria, BC V8M 1X6

WARRANTY 5-year Limited Warranty for defects in workmanship and materials (excludes batteries and vandalism)

FL-7400-40W 24-Hour Flashing Beacon



SIDE MOUNT BRACKET

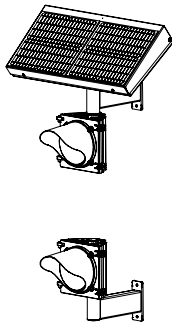


SIGNAL HEAD & SOLAR ENGINE
SIDE MOUNT BRACKET

SIGNAL HEAD MOUNTING OPTIONS

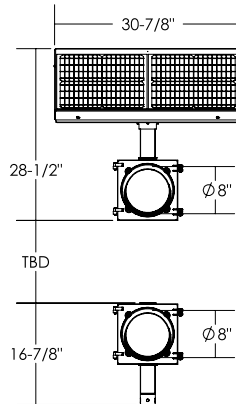
SOLAR ENGINE MOUNTING OPTIONS

ISO VIEW

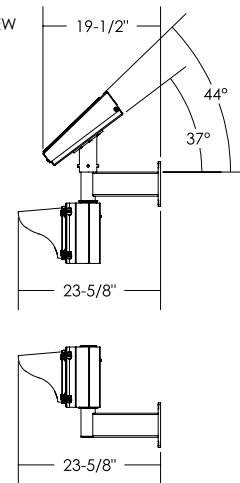


FL-7408-40W

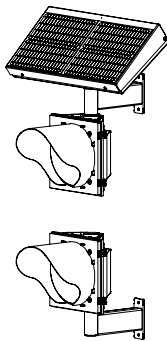
FRONT VIEW



SIDE VIEW

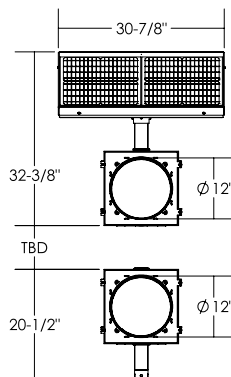


ISO VIEW

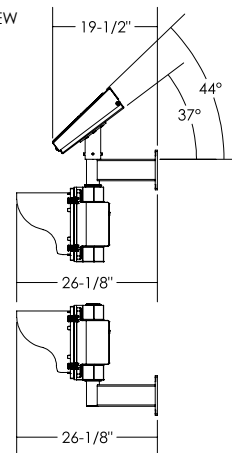


FL-7412-40W

FRONT VIEW



SIDE VIEW



SYSTEM DRAWINGS



FL-7400-AC 24-Hour Flashing Beacon



AC ENCLOSURE

Enclosure Material	0.08" Type 5052 H-32 aluminum
Enclosure Dimensions (Small)	12" x 12" x 4" (30 x 30 x 10cm)*
Enclosure Dimensions (Large)	16" x 14" x 8" (41 x 36 x 20cm)*
Standards	UL 508 Type 3R, 4, 4X, 12, and 13 CSA Type 3R, 4, 4X, 12, and 13
Compliance	NEMA Type 3R, 4, 4X, 12 and 13 JIC EGP-1-1967 IEC 60529, IP66
Enclosure Colors	Aluminum, Black, Green or Yellow (Custom Colors Available)



AC BRICK SPECIFICATIONS

Dimensions	6.375" x 1.625" x 1.25" @ 0.9 lbs (16.25 x 4.3 x 3.2 cm @ 0.41 kg)*
Power Supply Rating	120 VAC to 15 VDC Class 2 Supply
Standards	IP67, CE Certified, UL Recognized

SYSTEM PROTECTION

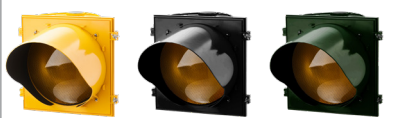
Over Current Protection	1.8 Amp PTC auto-reset fuse
Self Monitoring	Visual notification of sub-optimal operation

LED BEACON SIGNAL HEAD

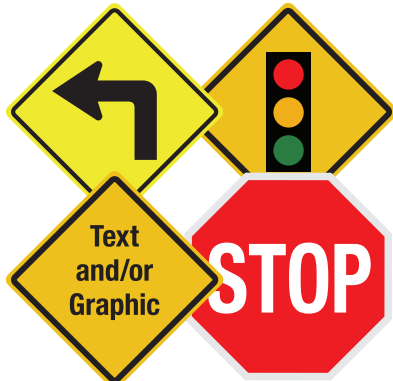
Standard Followed	ITE VTC SH-STD 2005
LED Beacon Signal Head Setup	Dual Heads, Vertical Pole Mounting
Lens Material	UV stabilized polycarbonate and Abrasion resistant
LED Housing	100% Polycarbonate
LED Size	8" Diameter (200 mm)* 12" Diameter (300mm)*
LED Housing Dimensions	8" head - 14" x 10" x 6" (35 x 25 x 16 cm)* 12" head - 17" x 14" x 6" (44 x 25 x 17 cm)*
Std. LED Color Options	Amber or Red (custom colors available)

SYSTEM OPTIONS

LED Housing Colors	Yellow, Black or Green (custom colors available)
Mounting Options	Side Mount Bracket: 12", and 18" and custom lengths available Custom Mounts Available



7408-AC
8" Amber LEDs



AVAILABLE WITH ANY STANDARD SIGN.
CUSTOM SIGNS ARE AVAILABLE

AVAILABLE WITH RED LEDs FOR STOP
SIGNS, AMBER LEDs FOR WARNING SIGNS

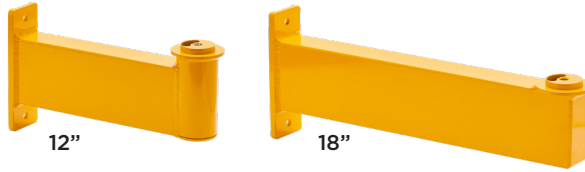
SYSTEM OVERVIEW

Compliance	FHWA MUTCD Compliant
Standard Operation	Continuous Flashing, 24-hours a day, 365 days a year Manual On/Off capability with user supplied switch
Flash Pattern Options	MUTCD Standard (0.5 seconds ON, 0.5 seconds OFF) JSFT Strobe Energy Efficient Flash Pattern** MUTCD Wig - Wag JSFT Wig - Wag Strobe Energy Efficient Flash Pattern**
Std. Operating Temperature	-40°F to +176°F (-40°C to +80°C)
System Voltage	12 VDC
Packaged Dimensions	Varies depending on configuration and installation method

SALES Toll-Free 1.800.990.2454 sales@jsftech.com	SUPPORT Toll-Free 1.800.990.2454 support@jsftech.com	ADDRESS 6582 Bryn Road, Victoria, BC V8M 1X6
---	---	---

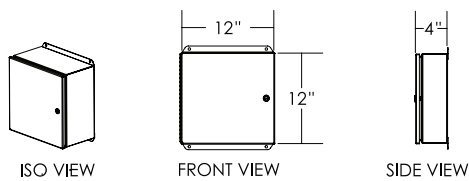
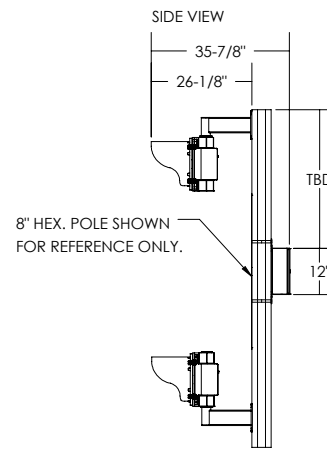
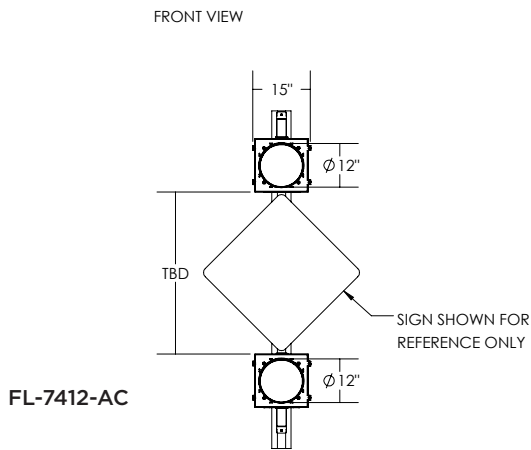
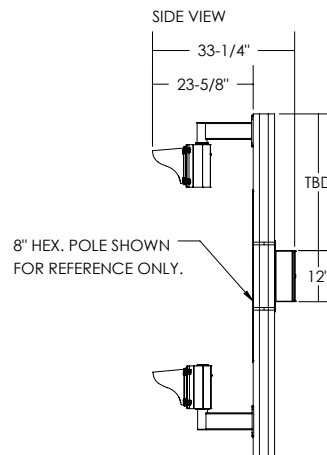
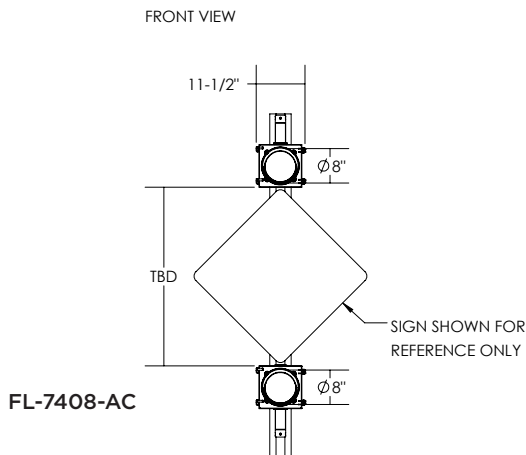
WARRANTY 5-year Limited Warranty for defects in workmanship and materials (excludes batteries and vandalism)

FL-7400-AC 24-Hour Flashing Beacon

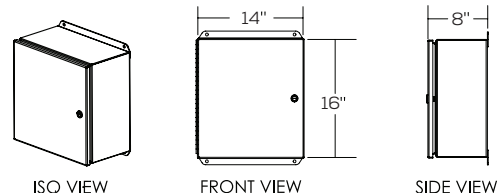


SIDE MOUNT BRACKET

SIGNAL HEAD MOUNTING OPTIONS



SMALL AC CABINET



LARGE AC CABINET

SYSTEM DRAWINGS