


SZ-2400-20W

Safety Zone Programmable/Remote Flashing Beacon



SELF-CONTAINED 20 WATT SOLAR ENGINE

	Solar Panel Solar Cell - Monocrystalline Silicon Rated Power (Pmp) 20 Watts Rated Voltage (Vmp) 18 VDC Rated Current (Imp) 1.1 Amps CE and TUV certified
Solar Angle	7° (Flat) 44° (Standard)
Standard Battery Bank	AGM 12V, 18 Ah - UL Recognized, field replaceable
Cold Weather Battery Bank Option	AGM 12V, 16 Ah - UL Recognized, field replaceable
Solar Engine Housing Material	A5052 Sheet Aluminum (Enclosure) 6061-T6 Aluminum (Mount)
Solar Engine Dimensions	15.75" x 13.25" X 4.5" (40 x 33.7 x 11.5cm)*

POWER MANAGEMENT

Rated Usage	300 cycles per day, 25 second activation
Charged Capacity	Up to 30 days at rated usage
Automatic Light Control (ALC)	Various stages of brightness for different solar conditions and battery levels

SYSTEM PROTECTION

Low Voltage Disconnect	9.5 VDC
Over Current Protection	1.8 Amp PTC auto-reset fuse
Self Monitoring	Visual notification of sub-optimal operation

LED BEACON SIGNAL HEAD

Standard Followed	ITE VTCSH-STD 2005
LED Beacon Signal Head Setup	Dual Heads Pole Top Mounting
Lens Material	UV stabilized polycarbonate and Abrasion resistant
LED Housing	100% Polycarbonate
LED Size	8" Diameter (200 mm)* 12" Diameter (300mm)*
LED Housing Dimensions	8" head - 14" x 10" x 6" (35 x 25 x 16 cm)* 12" head - 17" x 14" x 6" (44 x 25 x 17 cm)*
Std. LED Color Options	Amber or Red (custom colors available)

COMMUNICATION

Band of Operation	ISM Band (902-928 MHz)
Compliance	FCC and IC Compliant
Range	Up to 0.5 miles (800 m) with line of sight
Network Addresses	16 unique addresses to avoid interference between multiple crosswalk locations
Compatibility	Can communicate with other SZ units

SYSTEM OPTIONS

LED & Solar Engine Housing Colors	Yellow, Black or Green (custom colors available)
Mounting Options	Wood Post Saddle Mount: 4" x 4", 6" x 6" Round Collar Mount: 2.5", 3.5", 5", 6" Side Mount Bracket: 18", 36", and 48"

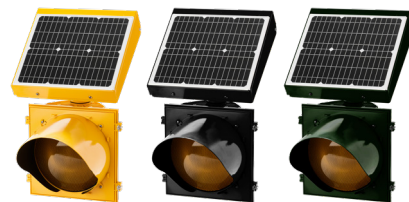


AVAILABLE WITH RED LEDs FOR STOP SIGNS, AMBER LEDs FOR WARNING SIGNS

SYSTEM OVERVIEW

Compliance	FHWA MUTCD Compliant
Operation	Programmed Schedule remotely transmitted from Primary SZ units Pedestrian Activated via push button or JSFT remote transmitters
Operation Functions	MUTCD Standard (0.5 seconds ON, 0.5 seconds OFF) JSFT Strobe Energy Efficient Flash Pattern** MUTCD Wig - Wag JSFT Wig - Wag Strobe Energy Efficient Flash Pattern**
Activation Duration	Variable from 5 seconds to 4 hours
Std. Operating Temperature	14°F to +165°F (-10°C to +74°C)
Cold Weather Upgrade Option	-40°F to +176°F (-40°C to +80°C)
System Voltage	12 VDC
Packaged Dimensions	8" heads - 35" x 28" x 17" @ 66 lbs (89 x 71 x 43cm @ 30 kg)* 12" heads - 35" x 28" x 17" @ 76 lbs (89 x 71 x 43cm @ 35 kg)*

SIGNAL HEAD AND SOLAR ENGINE AVAILABLE WITH STANDARD COLOURS; YELLOW, BLACK, OR GREEN. CUSTOM COLOURS ARE ALWAYS AVAILABLE.



SALES
Toll-Free 1.800.990.2454
sales@jsftech.com

SUPPORT
Toll-Free 1.800.990.2454
support@jsftech.com

ADDRESS
6582 Bryn Road,
Victoria, BC V8M 1X6

WARRANTY 5-year Limited Warranty for defects in workmanship and materials (excludes batteries and vandalism)



SZ-2400-20W

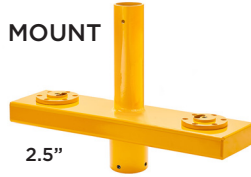
Safety Zone Programmable/Remote Flashing Beacon

SZ SERIES

STANDARD ROUND MOUNT



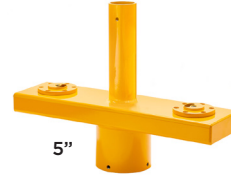
18"
SIDE MOUNT BRACKET
ALSO AVAILABLE IN 36" & 48"



2.5"



3.5"



5"



6"

WOOD POST SADDLE MOUNT



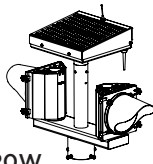
4X4"



6X6"

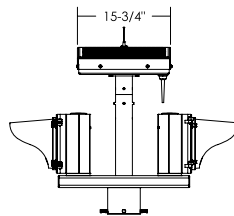
MOUNTING OPTIONS

ISO VIEW

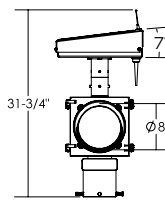


SZ-2408-20W
FLAT PANEL ANGLE

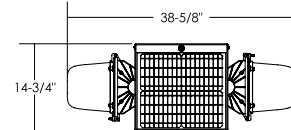
SIDE VIEW



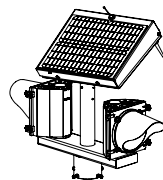
FRONT VIEW



TOP VIEW

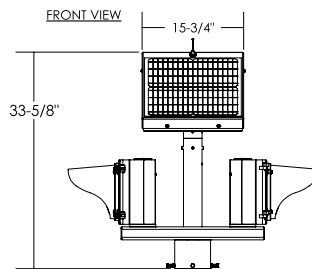


ISO VIEW

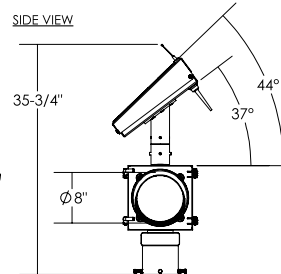


SZ-2408-20W
STANDARD PANEL ANGLE

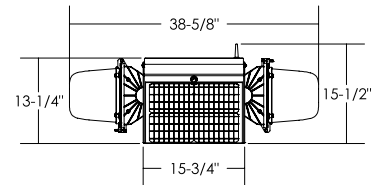
FRONT VIEW



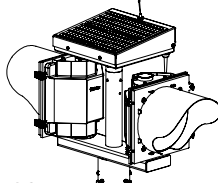
SIDE VIEW



TOP VIEW

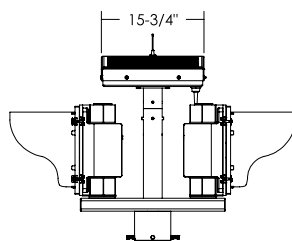


ISO VIEW

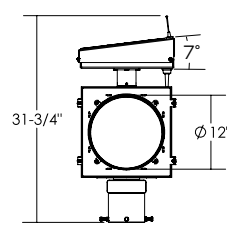


SZ-2412-20W
FLAT PANEL ANGLE

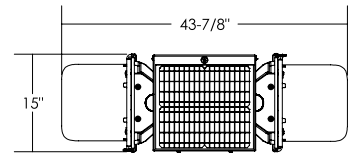
SIDE VIEW



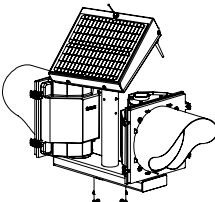
FRONT VIEW



TOP VIEW

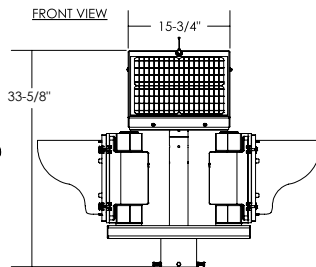


ISO VIEW

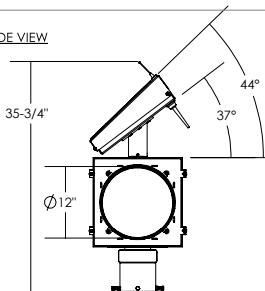


SZ-2412-20W
STANDARD PANEL ANGLE

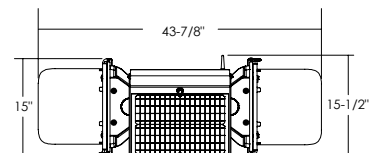
FRONT VIEW



SIDE VIEW



TOP VIEW



SYSTEM DRAWINGS



JSF
TECHNOLOGIES
SOLAR TRAFFIC SOLUTIONS

www.JSFTech.com

sales@JSFTech.com

1-800-990-2454




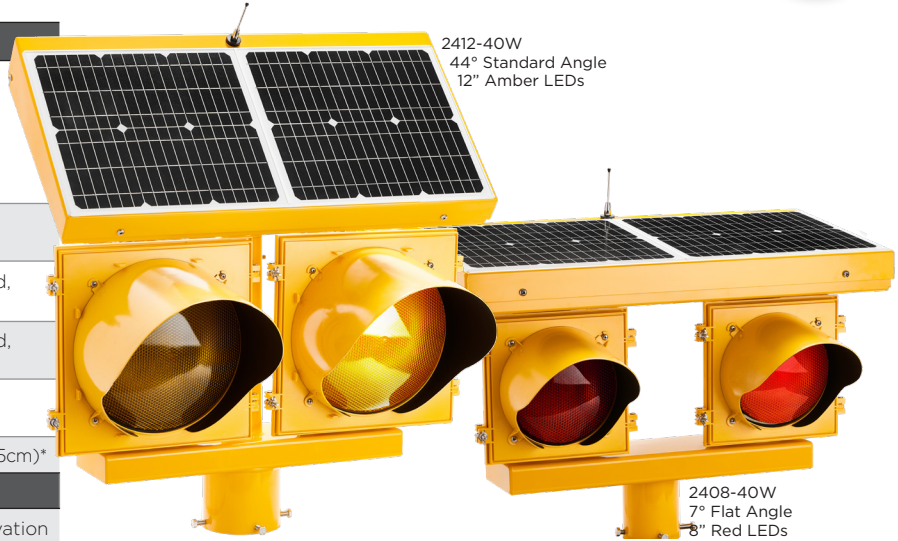
SZ-2400-40W

Safety Zone Programmable/Remote Flashing Beacon



SELF-CONTAINED 40 WATT SOLAR ENGINE

	Solar Panel Solar Cell - Monocrystalline Silicon Rated Power (Pmp) 40 Watts Rated Voltage (Vmp) 18 VDC Rated Current (Imp) 2.2 Amps CE and TUV certified
	Solar Angle 7° (Flat) 44° (Standard)
	Standard Battery Bank 2 x AGM 12V, 18 Ah - UL Recognized, field replaceable
	Cold Weather Battery Bank Option 2 x AGM 12V, 16 Ah - UL Recognized, field replaceable
	Solar Engine Housing Material A5052 Sheet Aluminum (Enclosure) 6061-T6 Aluminum (Mount)
	Solar Engine Dimensions 30.875" x 13.25" x 4.5" (78.4 x 33.7 x 11.5cm)*



2412-40W
44° Standard Angle
12" Amber LEDs

2408-40W
7° Flat Angle
8" Red LEDs

POWER MANAGEMENT

Rated Usage	300 cycles per day, 25 second activation
Charged Capacity	Up to 30 days at rated usage
Automatic Light Control (ALC)	Various stages of brightness for different solar conditions and battery levels

SYSTEM PROTECTION

Low Voltage Disconnect	9.5 VDC
Over Current Protection	1.8 Amp PTC auto-reset fuse
Self Monitoring	Visual notification of sub-optimal operation

LED BEACON SIGNAL HEAD

Standard Followed	ITE VTCOSH-STD 2005
LED Beacon Signal Head Setup	Dual Heads Pole Top Mounting
Lens Material	UV stabilized polycarbonate and Abrasion resistant
LED Housing	100% Polycarbonate
LED Size	8" Diameter (200 mm)* 12" Diameter (300mm)*
LED Housing Dimensions	8" head - 14" x 10" x 6" (35 x 25 x 16 cm)* 12" head - 17" x 14" x 6" (44 x 25 x 17 cm)*
Std. LED Color Options	Amber or Red (custom colors available)

COMMUNICATION

Band of Operation	ISM Band (902-928 MHz)
Compliance	FCC and IC Compliant
Range	Up to 0.5 miles (800 m) with line of sight
Network Addresses	16 unique addresses to avoid interference between multiple crosswalk locations
Compatibility	Can communicate with other SZ units

SYSTEM OPTIONS

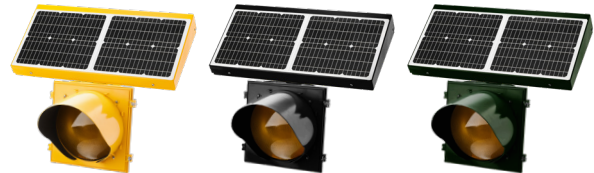
LED & Solar Engine Housing Colors	Yellow, Black or Green (custom colors available)
Mounting Options	Wood Post Saddle Mount: 4" x 4", 6" x 6" Round Collar Mount: 2.5", 3.5", 5", 6" Side Mount Bracket: 18", 36", and 48"

AVAILABLE WITH RED LEDs FOR STOP SIGNS, AMBER LEDs FOR WARNING SIGNS

SYSTEM OVERVIEW

Compliance	FHWA MUTCD Compliant
Operation	Programmed Schedule remotely transmitted from Primary SZ units Pedestrian Activated via push button or JSFT remote transmitters
Operation Functions	MUTCD Standard (0.5 seconds ON, 0.5 seconds OFF) JSFT Strobe Energy Efficient Flash Pattern** MUTCD Wig - Wag JSFT Wig - Wag Strobe Energy Efficient Flash Pattern**
Activation Duration	Variable from 5 seconds to 4 hours
Std. Operating Temperature	14°F to +165°F (-10°C to +74°C)
Cold Weather Upgrade Option	-40°F to +176°F (-40°C to +80°C)
System Voltage	12 VDC
Packaged Dimensions	8" head - 35" x 28" x 17" @ 74 lbs (89 x 71 x 43cm @ 34 kg)* 12" head - 35" x 28" x 17" @ 84 lbs (89 x 71 x 43cm @ 38 kg)*

SIGNAL HEAD AND SOLAR ENGINE AVAILABLE WITH STANDARD COLOURS; YELLOW, BLACK, OR GREEN. CUSTOM COLOURS ARE ALWAYS AVAILABLE.



SALES

Toll-Free 1.800.990.2454
sales@jsftech.com

SUPPORT

Toll-Free 1.800.990.2454
support@jsftech.com

ADDRESS

6582 Bryn Road,
Victoria, BC V8M 1X6

WARRANTY 5-year Limited Warranty for defects in workmanship and materials (excludes batteries and vandalism)

Distributed by **FORTRAN** www.fortrantraffic.com
Central Office: 1-800-387-4555

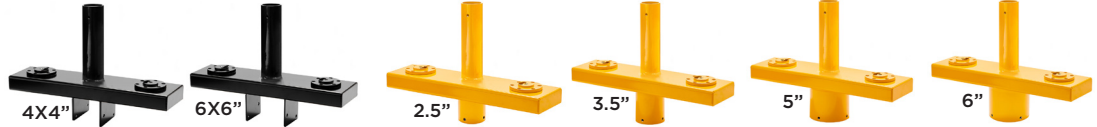
*All measurements and weights are approximate **50% power consumption of MUTCD

SZ-2400-40W
Safety Zone Programmable/Remote Flashing Beacon



18"
SIDE MOUNT BRACKET
ALSO AVAILABLE IN 36" & 48"

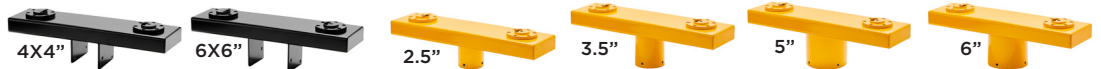
STANDARD PANEL ANGLE MOUNTS



WOOD POST SADDLE MOUNT

STANDARD ROUND MOUNT

FLAT PANEL ANGLE MOUNTS

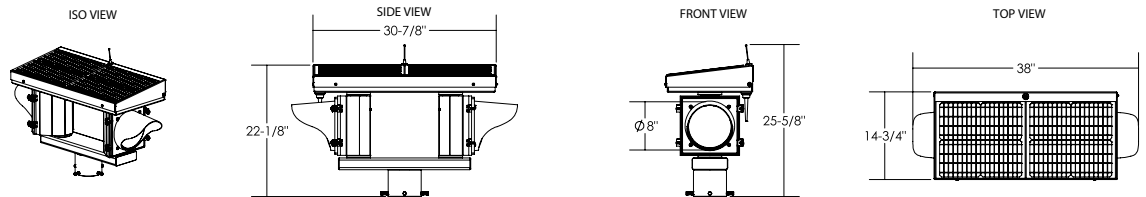


WOOD POST SADDLE MOUNT

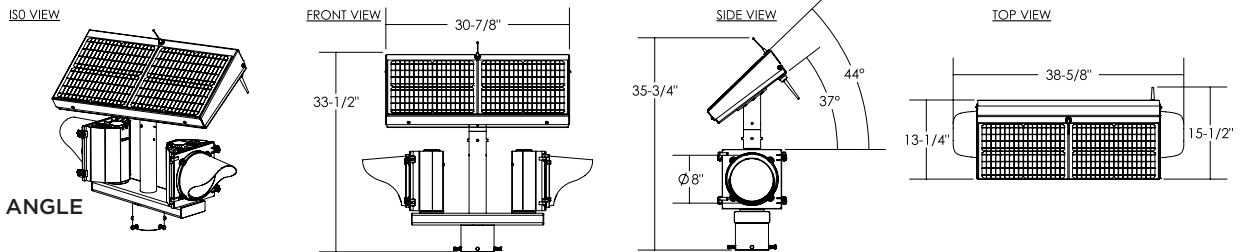
STANDARD ROUND MOUNT

MOUNTING OPTIONS

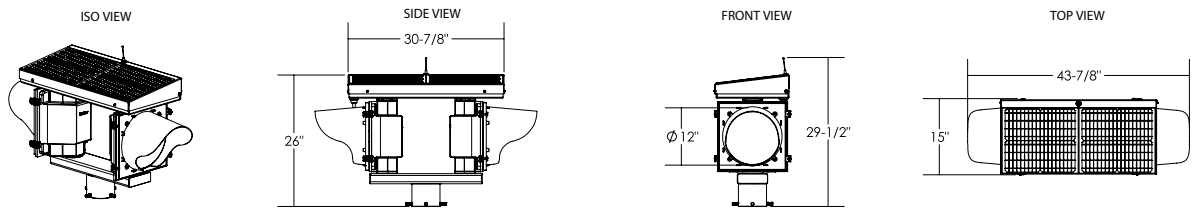
SZ-2408-40W
FLAT PANEL ANGLE



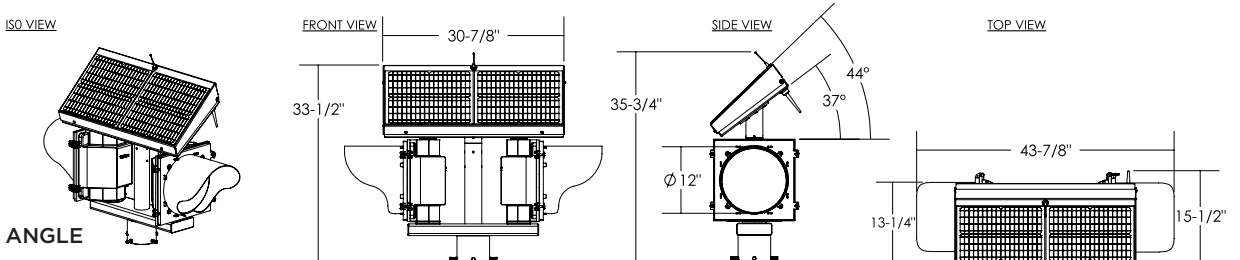
SZ-2408-40W
STANDARD PANEL ANGLE



SZ-2412-40W
FLAT PANEL ANGLE



SZ-2412-40W
STANDARD PANEL ANGLE



SYSTEM DRAWINGS



SZ-2400-AC

Safety Zone Programmable/Remote Flashing Beacon



AC ENCLOSURE

Enclosure Material	0.08" Type 5052 H-32 aluminum
Enclosure Dimensions (Small)	12" x 12" x 4" (30 x 30 x 10cm)*
Enclosure Dimensions (Large)	16" x 14" x 8" (41 x 36 x 20cm)*
Standards	UL 508 Type 3R, 4, 4X, 12, and 13 CSA Type 3R, 4, 4X, 12, and 13
Compliance	NEMA Type 3R, 4, 4X, 12 and 13 JIC EGP-1-1967 IEC 60529, IP66
Enclosure Colors	Aluminum, Black, Green or Yellow (Custom Colors Available)



AC BRICK SPECIFICATIONS

Dimensions	6.375" x 1.625" x 1.25" @ 0.9 lbs (16.25 x 4.3 x 3.2 cm @ 0.41 kg)*
Power Supply Rating	120 VAC to 15 VDC Class 2 Supply
Standards	IP67, CE Certified, UL Recognized

SYSTEM PROTECTION

Over Current Protection	1.8 Amp PTC auto-reset fuse
Self Monitoring	Visual notification of sub-optimal operation

LED BEACON SIGNAL HEAD

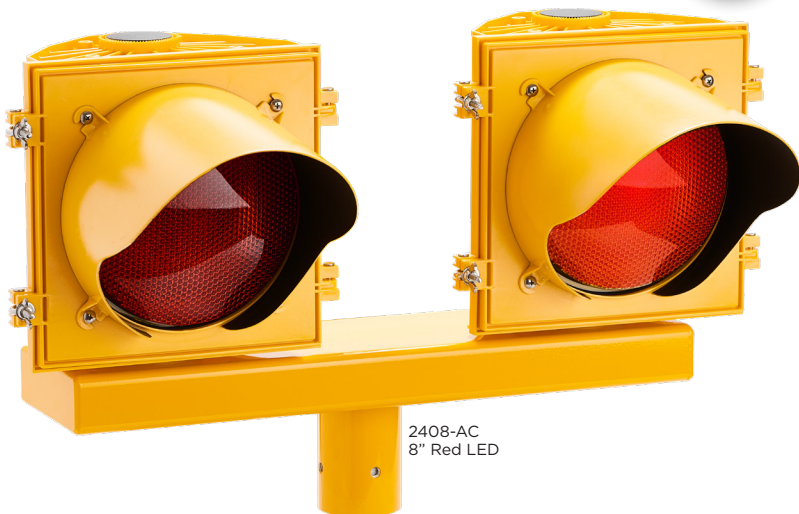
Standard Followed	ITE VTCSH-STD 2005
LED Beacon Signal Head Setup	Dual Heads Pole Top Mounting
Lens Material	UV stabilized polycarbonate and Abrasion resistant
LED Housing	100% Polycarbonate
LED Size	8" Diameter (200 mm)* 12" Diameter (300mm)*
LED Housing Dimensions	8" head - 14" x 10" x 6" (35 x 25 x 16 cm)* 12" head - 17" x 14" x 6" (44 x 25 x 17 cm)*
Std. LED Color Options	Amber or Red (custom colors available)

COMMUNICATION

Band of Operation	ISM Band (902-928 MHz)
Compliance	FCC and IC Compliant
Range	Up to 0.5 miles (800 m) with line of sight
Network Addresses	16 unique addresses to avoid interference between multiple crosswalk locations
Compatibility	Can communicate with other SZ units

SYSTEM OPTIONS

LED Housing Colors	Yellow, Black or Green (custom colors available)
Mounting Options	Wood Post Saddle Mount: 4" x 4", 6" x 6" Round Collar Mount: 2.5", 3.5", 4.5", 5" Side Mount Bracket: 18", 36", and 48"



AVAILABLE WITH RED LEDS FOR STOP SIGNS, AMBER LEDS FOR WARNING SIGNS

SYSTEM OVERVIEW

Compliance	FHWA MUTCD Compliant
Operation	Programmed Schedule remotely transmitted from Primary SZ units Pedestrian Activated via push button or JSFT remote transmitters
Operation Functions	MUTCD Standard (0.5 seconds ON, 0.5 seconds OFF) JSFT Strobe Energy Efficient Flash Pattern** MUTCD Wig - Wag JSFT Wig - Wag Strobe Energy Efficient Flash Pattern**
Activation Duration	Variable from 5 seconds to 4 hours
Std. Operating Temperature	-40°F to +176°F (-40°C to +80°C)
System Voltage	12 VDC
Packaged Dimensions	Varies depending on configuration and installation method

SIGNAL HEAD AND SOLAR ENGINE AVAILABLE WITH STANDARD COLOURS;
YELLOW, BLACK, OR GREEN. CUSTOM COLOURS ARE ALWAYS AVAILABLE.



SALES
Toll-Free 1.800.990.2454
sales@jsftech.com

SUPPORT
Toll-Free 1.800.990.2454
support@jsftech.com

ADDRESS
6582 Bryn Road,
Victoria, BC V8M 1X6

WARRANTY 5-year Limited Warranty for defects in workmanship and materials (excludes batteries and vandalism)



SZ-2400-AC

Safety Zone Programmable/Remote Flashing Beacon



18"
SIDE MOUNT BRACKET
ALSO AVAILABLE IN 36" & 48"



4X4" SADDLE
MOUNT



6X6" SADDLE
MOUNT

WOOD POST MOUNT



2.5"



3.5"



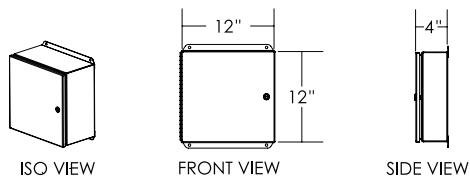
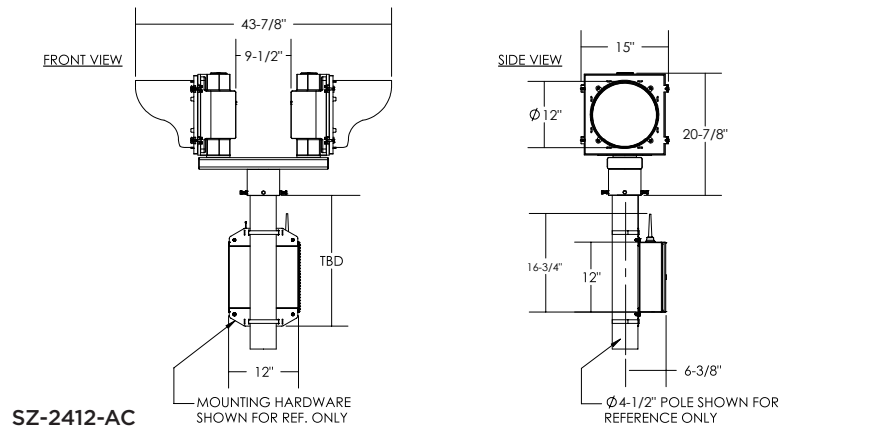
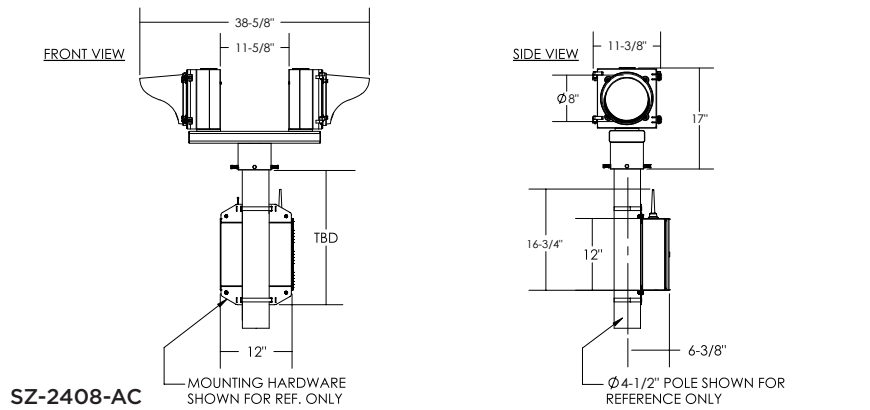
5"



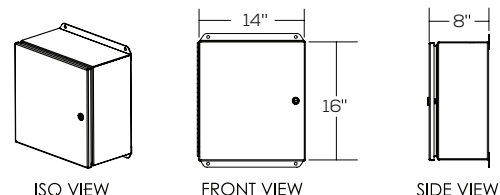
6"

STANDARD ROUND MOUNT

MOUNTING OPTIONS



SMALL AC CABINET



LARGE AC CABINET

SYSTEM DRAWINGS